

Schnellsteckverbinder

Serie »click-clock«
 Artikel-Nr. 745.003-3 bis PIB 200

P 6-326

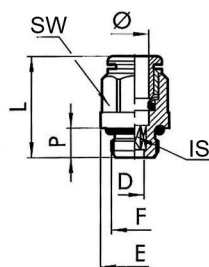
Die Fortentwicklung unserer höchst erfolgreichen Schnellsteckverbinder-Serie im Material Messing vernickelt.

Die Vorteile der weiterentwickelten Baureihe sind:

- wesentlich einfacheres Stecken und Lösen des Schlauches, vielfach wiederholbar
- verwendbar auch bei nichtkalibrierten Schläuchen
- geeignet für den Vakuumbetrieb

Arbeitsdruck: max. 16 bar
 Betriebstemperatur: -20 °C bis +80 °C
 Material: Messing vernickelt
 Andruckring: Hostaform
 Spanning: Edelstahl
 O-Ring: NBR

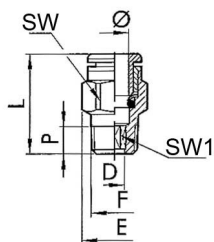
⇒ Hinweis: Unsere Reduzierungen, Verschlussstecker und Verlängerungen sind nicht geeignet für die T-Schwenk-Steckverbinder Serie 758 und die Mehrfach-Steckverbindungen Serien 759, 760 und 761.



745.014-8

Gerade Einschraubverschraubung, mit zylindrischem Außengewinde und O-Ring

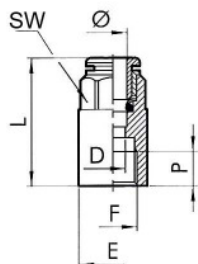
| Artikel-Nr. | Ø | F | SW | IS | P | L | D | E |
|-------------|----|-------|-------|------|------|------|------|------|
| 745.003-3 | 3 | M3 | Ø 5,8 | 1,5 | 3,0 | 12,6 | 1,5 | 5,8 |
| 745.005-3 | 3 | M5 | Ø 5,8 | 2,0 | 3,5 | 13,0 | 2,0 | 5,8 |
| 745.005-4 | 4 | M5 | Ø 9 | 2,5 | 4,0 | 20,3 | 2,6 | 9,0 |
| 745.005-5 | 5 | M5 | Ø 12 | 2,5 | 4,0 | 22,5 | 2,6 | 12,0 |
| 745.005-6 | 6 | M5 | Ø 11 | 2,5 | 4,0 | 21,9 | 2,6 | 11,0 |
| 745.007-4 | 4 | M7 | Ø 9 | 3,0 | 4,0 | 18,9 | 3,1 | 9,8 |
| 745.007-6 | 6 | M7 | Ø 11 | 4,0 | 5,0 | 23,0 | 4,1 | 11,0 |
| 745.018-4 | 4 | G 1/8 | 10 | 3,0 | 6,0 | 18,0 | 3,1 | 14,0 |
| 745.018-5 | 5 | G 1/8 | 13 | 3,0 | 6,0 | 22,0 | 3,1 | 15,0 |
| 745.018-6 | 6 | G 1/8 | 12 | 4,0 | 6,0 | 21,6 | 4,1 | 14,0 |
| 745.018-8 | 8 | G 1/8 | 13 | 5,0 | 6,0 | 25,4 | 5,2 | 14,0 |
| 745.014-4 | 4 | G 1/4 | 10 | 3,0 | 8,0 | 19,8 | 3,1 | 18,0 |
| 745.014-5 | 5 | G 1/4 | 12 | 3,0 | 8,0 | 24,0 | 3,1 | 18,0 |
| 745.014-6 | 6 | G 1/4 | 12 | 4,0 | 8,0 | 20,3 | 4,1 | 18,0 |
| 745.014-8 | 8 | G 1/4 | 14 | 6,0 | 8,0 | 24,4 | 6,2 | 18,0 |
| 745.014-10 | 10 | G 1/4 | 16 | 7,0 | 8,0 | 29,2 | 7,2 | 18,0 |
| 745.014-12 | 12 | G 1/4 | 19 | 7,0 | 8,0 | 30,5 | 7,2 | 21,0 |
| 745.038-8 | 8 | G 3/8 | 14 | 6,0 | 9,0 | 22,8 | 6,2 | 22,0 |
| 745.038-10 | 10 | G 3/8 | 16 | 8,0 | 9,0 | 26,5 | 8,2 | 22,0 |
| 745.038-12 | 12 | G 3/8 | 19 | 10,0 | 9,0 | 28,1 | 10,2 | 22,0 |
| 745.038-14 | 14 | G 3/8 | 22 | 10,0 | 9,0 | 33,8 | 10,2 | 24,6 |
| 745.012-10 | 10 | G 1/2 | 16 | 8,0 | 11,0 | 29,8 | 8,2 | 26,0 |
| 745.012-12 | 12 | G 1/2 | 19 | 10,0 | 11,0 | 29,3 | 10,2 | 26,0 |
| 745.012-14 | 14 | G 1/2 | 22 | 12,0 | 11,0 | 31,5 | 12,2 | 26,0 |



744.018-6

Gerade Einschraubverschraubung, mit konischem Außengewinde nach ISO 7-1

| Artikel-Nr. | Ø | F | SW | SW1 | D | E | L | P |
|-------------|----|-------|----|-----|------|------|------|------|
| 744.018-4 | 4 | R 1/8 | 10 | 3 | 3,1 | 11,3 | 18,5 | 6,2 |
| 744.018-6 | 6 | R 1/8 | 12 | 4 | 4,1 | 13,5 | 22,5 | 6,2 |
| 744.018-8 | 8 | R 1/8 | 13 | 6 | 5,2 | 14,3 | 26,0 | 6,2 |
| 744.014-6 | 6 | R 1/4 | 12 | 4 | 4,1 | 13,2 | 22,3 | 8,5 |
| 744.014-8 | 8 | R 1/4 | 14 | 6 | 6,2 | 15,8 | 25,5 | 8,5 |
| 744.014-10 | 10 | R 1/4 | 16 | 7 | 7,2 | 17,7 | 28,9 | 8,5 |
| 744.038-8 | 8 | R 3/8 | 14 | 6 | 6,2 | 16,6 | 24,9 | 9,0 |
| 744.038-10 | 10 | R 3/8 | 16 | 8 | 7,2 | 17,7 | 28,9 | 9,0 |
| 744.038-12 | 12 | R 3/8 | 19 | 10 | 10,2 | 21,0 | 27,0 | 9,0 |
| 744.012-12 | 12 | R 1/2 | 19 | 10 | 10,2 | 21,3 | 26,6 | 11,0 |



746.018-6

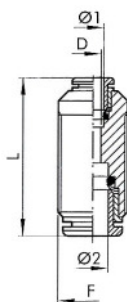
Gerade Aufschraubverschraubung, mit Innengewinde

| Artikel-Nr. | Ø | F | SW | P | L | D | E |
|-------------|----|-------|----|------|------|------|------|
| 746.005-3 | 3 | M5 | 7 | 4,5 | 15,7 | 2,5 | 7,8 |
| 746.018-4 | 4 | G 1/8 | 10 | 7,0 | 26,2 | 3,0 | 14,0 |
| 746.018-5 | 5 | G 1/8 | 12 | 7,0 | 27,5 | 4,0 | 14,0 |
| 746.018-6 | 6 | G 1/8 | 12 | 7,0 | 27,1 | 5,0 | 14,0 |
| 746.018-8 | 8 | G 1/8 | 13 | 7,0 | 28,1 | 7,0 | 14,0 |
| 746.014-4 | 4 | G 1/4 | 10 | 8,0 | 28,6 | 3,0 | 17,0 |
| 746.014-6 | 6 | G 1/4 | 12 | 8,0 | 29,3 | 5,0 | 17,0 |
| 746.014-8 | 8 | G 1/4 | 14 | 8,0 | 30,0 | 7,0 | 17,0 |
| 746.014-10 | 10 | G 1/4 | 16 | 8,0 | 31,8 | 8,0 | 17,7 |
| 746.038-10 | 10 | G 3/8 | 16 | 10,0 | 36,8 | 8,0 | 20,8 |
| 746.038-12 | 12 | G 3/8 | 19 | 10,0 | 37,0 | 10,0 | 20,8 |
| 746.012-12 | 12 | G 1/2 | 19 | 11,0 | 40,5 | 10,0 | 23,8 |

Schnellsteckverbinder

Serie »click-clock«
 Artikel-Nr. 745.003-3 bis PIB 200

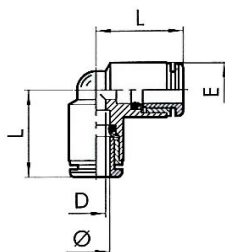
P 6-326



747.008

Gerade Verbinder

| Artikel-Nr. | Ø1 | Ø2 | F | L | D |
|-------------|----|----|---------|------|------|
| 747.003-3 | 3 | 3 | M8x0,75 | 18,4 | 2,0 |
| 747.004 | 4 | 4 | M11x1,0 | 30,6 | 2,5 |
| 747.0406 | 4 | 6 | M13x1,0 | 32,7 | 2,5 |
| 747.005 | 5 | 5 | M14x1,0 | 33,5 | 4,0 |
| 747.006 | 6 | 6 | M13x1,0 | 33,0 | 4,5 |
| 747.0408 | 4 | 8 | M15x1,0 | 34,4 | 2,5 |
| 747.0608 | 6 | 8 | M15x1,0 | 35,0 | 4,5 |
| 747.008 | 8 | 8 | M15x1,0 | 35,7 | 6,5 |
| 747.0610 | 6 | 10 | M17x1,0 | 37,5 | 4,5 |
| 747.0612 | 6 | 12 | M20x1,0 | 39,0 | 4,5 |
| 747.0810 | 8 | 10 | M17x1,0 | 37,8 | 6,5 |
| 747.0812 | 8 | 12 | M20x1,0 | 40,1 | 6,0 |
| 747.010 | 10 | 10 | M17x1,0 | 39,2 | 8,0 |
| 747.012 | 12 | 12 | M20x1,0 | 39,7 | 10,0 |
| 747.014 | 14 | 14 | M24x1,0 | 45,9 | 12,0 |
| 747.1012 | 10 | 12 | M20x1,0 | 40,8 | 8,0 |



748.006

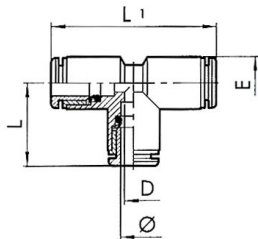
Winkelverbinder

| Artikel-Nr. | Ø | L | D | E |
|-------------|----|------|------|------|
| 748.003 | 3 | 10,4 | 2,0 | 6,3 |
| 748.004 | 4 | 16,7 | 2,5 | 10,0 |
| 748.005 | 5 | 19,2 | 3,0 | 13,5 |
| 748.006 | 6 | 19,0 | 4,5 | 11,5 |
| 748.008 | 8 | 21,3 | 6,5 | 13,5 |
| 748.010 | 10 | 23,3 | 8,0 | 15,5 |
| 748.012 | 12 | 26,0 | 10,0 | 20,5 |
| 748.014 | 14 | 29,3 | 12,0 | 22,0 |

P 6-326

Schnellsteckverbinder

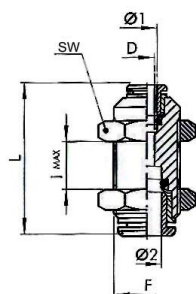
Serie »click-clock«
Artikel-Nr. 745.003-3 bis PIB 200



749.006

T-Verbinder

| Artikel-Nr. | Ø | L | L1 | D | E |
|-------------|----|------|------|------|------|
| 749.003 | 3 | 10,4 | 21,2 | 2,0 | 6,3 |
| 749.004 | 4 | 16,7 | 33,4 | 2,5 | 10,0 |
| 749.005 | 5 | 19,2 | 38,4 | 3,0 | 13,5 |
| 749.006 | 6 | 19,0 | 38,0 | 4,5 | 11,5 |
| 749.008 | 8 | 21,3 | 42,6 | 6,5 | 13,5 |
| 749.010 | 10 | 23,3 | 46,6 | 8,0 | 15,5 |
| 749.012 | 12 | 26,0 | 52,0 | 10,0 | 20,5 |
| 749.014 | 14 | 29,3 | 58,6 | 12,0 | 22,0 |



751.016-8

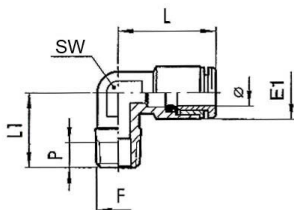
Schottverschraubung

| Artikel-Nr. | Ø1 | Ø2 | F | SW | L | D | I max |
|-------------|----|----|-------|----|------|------|-------|
| 751.012-4 | 4 | 4 | M11x1 | 13 | 30,6 | 2,5 | 11,0 |
| 751.013-46 | 4 | 6 | M13x1 | 16 | 32,7 | 2,5 | 11,0 |
| 751.014-5 | 5 | 5 | M14x1 | 17 | 33,5 | 4,0 | 8,0 |
| 751.014-6 | 6 | 6 | M13x1 | 16 | 33,0 | 4,5 | 12,0 |
| 751.015-48 | 4 | 8 | M15x1 | 17 | 34,4 | 2,5 | 12,0 |
| 751.015-68 | 6 | 8 | M15x1 | 17 | 35,0 | 4,5 | 13,0 |
| 751.016-8 | 8 | 8 | M15x1 | 17 | 35,7 | 6,5 | 13,5 |
| 751.017-610 | 6 | 10 | M17x1 | 20 | 37,5 | 4,5 | 14,5 |
| 751.017-810 | 8 | 10 | M17x1 | 20 | 37,8 | 6,5 | 15,0 |
| 751.020-10 | 10 | 10 | M17x1 | 20 | 39,2 | 8,0 | 17,0 |
| 751.022-12 | 12 | 12 | M20x1 | 24 | 40,7 | 10,0 | 20,3 |
| 751.024-14 | 14 | 14 | M24x1 | 27 | 45,9 | 12,0 | 21,9 |

Schnellsteckverbinder

Serie »click-clock«
 Artikel-Nr. 745.003-3 bis PIB 200

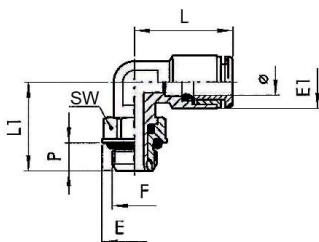
P 6-326



752.018-6

Winkel-Einschraubverschraubung, Außengewinde konisch nach ISO 7-1

| Artikel-Nr. | Ø | F | SW | E1 | L | L1 | P |
|-------------|----|-------|----|------|------|------|-----|
| 752.018-4 | 4 | R 1/8 | 10 | 9,5 | 18,6 | 16,0 | 6,2 |
| 752.018-6 | 6 | R 1/8 | 10 | 11,8 | 21,9 | 16,0 | 6,2 |
| 752.018-8 | 8 | R 1/8 | 10 | 13,5 | 25,4 | 16,0 | 6,2 |
| 752.014-6 | 6 | R 1/4 | 10 | 11,8 | 21,9 | 18,5 | 8,5 |
| 752.014-8 | 8 | R 1/4 | 10 | 13,5 | 25,4 | 18,5 | 8,5 |
| 752.014-10 | 10 | R 1/4 | 14 | 16,0 | 27,2 | 22,0 | 8,5 |



754.018-6

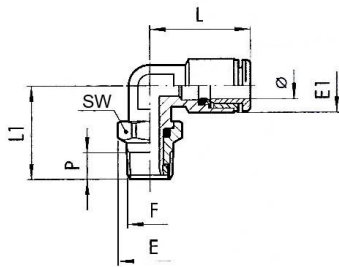
Winkel-Einschraubverschraubung, drehbar, Außengewinde zylindrisch mit O-Ring

| Artikel-Nr. | Ø | F | SW | E | E1 | L | L1 | P |
|-------------|----|-------|----|------|------|------|------|------|
| 754.005-4 | 4 | M5 | 9 | 9,9 | 9,5 | 18,6 | 15,3 | 4,0 |
| 754.005-5 | 5 | M5 | 9 | 9,9 | 11,5 | 22,8 | 15,3 | 4,0 |
| 754.005-6 | 6 | M5 | 9 | 9,9 | 11,8 | 21,9 | 15,3 | 4,0 |
| 754.018-4 | 4 | G 1/8 | 12 | 14,0 | 9,5 | 18,6 | 19,1 | 6,0 |
| 754.018-5 | 5 | G 1/8 | 12 | 15,0 | 11,5 | 22,8 | 19,1 | 6,0 |
| 754.018-6 | 6 | G 1/8 | 12 | 14,0 | 11,8 | 21,9 | 19,1 | 6,0 |
| 754.018-8 | 8 | G 1/8 | 12 | 14,0 | 13,5 | 25,4 | 19,1 | 6,0 |
| 754.014-4 | 4 | G 1/4 | 14 | 18,0 | 9,5 | 18,6 | 21,1 | 8,0 |
| 754.014-5 | 5 | G 1/4 | 14 | 18,0 | 13,5 | 22,8 | 21,8 | 8,0 |
| 754.014-6 | 6 | G 1/4 | 14 | 18,0 | 11,8 | 21,9 | 21,1 | 8,0 |
| 754.014-8 | 8 | G 1/4 | 14 | 18,0 | 13,5 | 25,4 | 21,1 | 8,0 |
| 754.014-10 | 10 | G 1/4 | 14 | 18,0 | 16,0 | 27,2 | 24,8 | 8,0 |
| 754.038-8 | 8 | G 3/8 | 17 | 22,0 | 13,8 | 23,6 | 27,1 | 9,0 |
| 754.038-10 | 10 | G 3/8 | 17 | 22,0 | 16,0 | 27,2 | 27,1 | 9,0 |
| 754.038-12 | 12 | G 3/8 | 17 | 22,0 | 20,0 | 30,0 | 27,1 | 9,0 |
| 754.012-10 | 10 | G 1/2 | 22 | 26,0 | 16,0 | 27,2 | 30,7 | 11,0 |
| 754.012-12 | 12 | G 1/2 | 22 | 26,0 | 20,0 | 30,0 | 30,7 | 11,0 |
| 754.012-14 | 14 | G 1/2 | 22 | 26,0 | 21,3 | 33,0 | 32,3 | 11,0 |

P 6-326

Schnellsteckverbinder

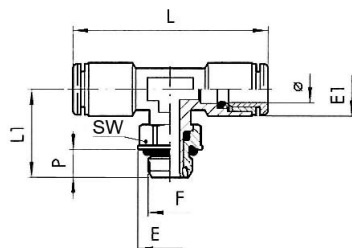
Serie »click-clock«
Artikel-Nr. 745.003-3 bis PIB 200



7754.018-6

Winkel-Einschraubverschraubung, drehbar, Außengewinde konisch nach ISO 7-1

| Artikel-Nr. | Ø | F | SW | E | E1 | L | L1 | P |
|-------------|----|-------|----|------|------|------|------|------|
| 7754.018-4 | 4 | R 1/8 | 12 | 13,3 | 9,5 | 18,6 | 19,8 | 6,2 |
| 7754.018-6 | 6 | R 1/8 | 12 | 13,3 | 11,8 | 21,9 | 19,8 | 6,2 |
| 7754.018-8 | 8 | R 1/8 | 12 | 13,3 | 13,5 | 25,4 | 19,8 | 6,2 |
| 7754.014-4 | 4 | R 1/4 | 14 | 15,4 | 9,5 | 18,6 | 22,6 | 8,5 |
| 7754.014-6 | 6 | R 1/4 | 14 | 15,4 | 11,8 | 21,9 | 22,6 | 8,5 |
| 7754.014-8 | 8 | R 1/4 | 14 | 15,4 | 13,5 | 25,4 | 23,6 | 8,5 |
| 7754.014-10 | 10 | R 1/4 | 14 | 15,4 | 16,0 | 27,2 | 26,3 | 8,5 |
| 7754.038-8 | 8 | R 3/8 | 17 | 19,2 | 13,8 | 23,6 | 27,1 | 9,0 |
| 7754.038-10 | 10 | R 3/8 | 17 | 19,2 | 16,0 | 27,2 | 27,1 | 9,0 |
| 7754.038-12 | 12 | R 3/8 | 17 | 19,2 | 20,0 | 30,0 | 27,1 | 9,0 |
| 7754.012-12 | 12 | R 1/2 | 22 | 24,6 | 20,0 | 30,0 | 31,9 | 11,0 |



755.018-6

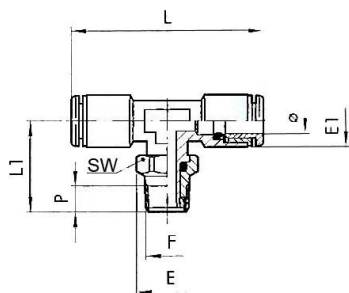
T-Einschraubverschraubung, drehbar, Außengewinde zylindrisch mit O-Ring

| Artikel-Nr. | Ø | F | SW | E | E1 | L | L1 | P |
|-------------|----|-------|----|------|------|------|------|------|
| 755.018-4 | 4 | G 1/8 | 12 | 14,0 | 9,5 | 37,2 | 19,1 | 6,0 |
| 755.018-5 | 5 | G 1/8 | 12 | 15,2 | 11,5 | 44,6 | 19,1 | 6,0 |
| 755.018-6 | 6 | G 1/8 | 12 | 14,0 | 11,8 | 43,8 | 19,1 | 6,0 |
| 755.018-8 | 8 | G 1/8 | 12 | 15,2 | 13,5 | 50,8 | 19,1 | 6,0 |
| 755.014-6 | 6 | G 1/4 | 14 | 18,0 | 11,8 | 43,8 | 21,1 | 8,0 |
| 755.014-8 | 8 | G 1/4 | 14 | 18,0 | 13,5 | 50,8 | 21,1 | 8,0 |
| 755.014-10 | 10 | G 1/4 | 14 | 18,0 | 16,0 | 54,4 | 21,8 | 8,0 |
| 755.038-8 | 8 | G 3/8 | 17 | 22,0 | 13,8 | 47,2 | 27,1 | 9,0 |
| 755.038-10 | 10 | G 3/8 | 17 | 22,0 | 16,0 | 54,4 | 27,1 | 9,0 |
| 755.038-12 | 12 | G 3/8 | 17 | 22,0 | 20,0 | 59,0 | 27,1 | 9,0 |
| 755.012-12 | 12 | G 1/2 | 22 | 26,0 | 20,0 | 59,0 | 30,7 | 11,0 |
| 755.012-14 | 14 | G 1/2 | 22 | 26,0 | 21,3 | 66,0 | 32,3 | 11,0 |

Schnellsteckverbinder

Serie »click-clock«
 Artikel-Nr. 745.003-3 bis PIB 200

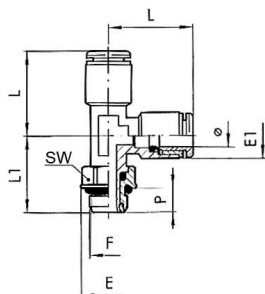
P 6-326



775.018-6

T-Einschraubverschraubung, drehbar, mit konischem Außengewinde nach ISO 7-1

| Artikel-Nr. | Ø | F | SW | E | E1 | L | L1 | P |
|-------------|----|-------|----|------|------|------|------|-----|
| 775.018-4 | 4 | R 1/8 | 12 | 13,3 | 9,5 | 37,2 | 19,8 | 6,2 |
| 775.018-6 | 6 | R 1/8 | 12 | 13,3 | 11,8 | 43,8 | 19,8 | 6,2 |
| 775.018-8 | 8 | R 1/8 | 12 | 13,3 | 13,5 | 50,8 | 19,8 | 6,2 |
| 775.014-4 | 4 | R 1/4 | 14 | 15,4 | 9,5 | 37,2 | 22,6 | 8,5 |
| 775.014-6 | 6 | R 1/4 | 14 | 15,4 | 11,8 | 43,8 | 22,6 | 8,5 |
| 775.014-8 | 8 | R 1/4 | 14 | 15,4 | 13,5 | 50,8 | 23,6 | 8,5 |
| 775.014-10 | 10 | R 1/4 | 14 | 15,4 | 16,0 | 54,4 | 26,3 | 8,5 |
| 775.038-8 | 8 | R 3/8 | 17 | 19,2 | 13,8 | 47,2 | 27,1 | 9,0 |
| 775.038-10 | 10 | R 3/8 | 17 | 19,2 | 16,0 | 54,4 | 27,1 | 9,0 |



738.038-12

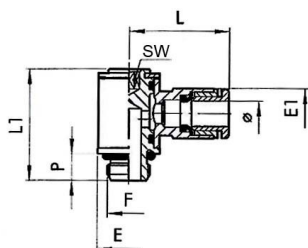
L-Einschraubverschraubung, drehbar, Außengewinde zylindrisch mit O-Ring

| Artikel-Nr. | Ø | F | SW | E | E1 | L | L1 | P |
|-------------|----|-------|----|------|------|------|------|------|
| 738.018-4 | 4 | G 1/8 | 12 | 14,0 | 9,5 | 18,6 | 19,1 | 6,0 |
| 738.018-6 | 6 | G 1/8 | 12 | 14,0 | 11,5 | 21,9 | 19,1 | 6,0 |
| 738.018-8 | 8 | G 1/8 | 12 | 14,0 | 13,5 | 25,4 | 19,1 | 6,0 |
| 738.014-6 | 6 | G 1/4 | 14 | 18,0 | 11,5 | 21,9 | 21,1 | 8,0 |
| 738.014-8 | 8 | G 1/4 | 14 | 18,0 | 13,5 | 25,4 | 22,1 | 8,0 |
| 738.014-10 | 10 | G 1/4 | 14 | 18,0 | 16,0 | 27,2 | 21,8 | 8,0 |
| 738.038-10 | 10 | G 3/8 | 17 | 22,0 | 16,0 | 27,2 | 27,1 | 9,0 |
| 738.038-12 | 12 | G 3/8 | 17 | 22,0 | 20,0 | 30,0 | 27,1 | 9,0 |
| 738.012-12 | 12 | G 1/2 | 22 | 26,0 | 20,0 | 30,0 | 30,7 | 11,0 |

P 6-326

Schnellsteckverbinder

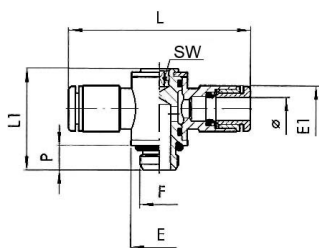
Serie »click-clock«
 Artikel-Nr. 745.003-3 bis PIB 200



756.018-6

Schwenkverschraubung, drehbar, Außengewinde zylindrisch mit O-Ring

| Artikel-Nr. | Ø | F | SW | P | L | L1 | E | E1 |
|-------------|----|-------|----|------|------|------|------|------|
| 756.003-3 | 3 | M3 | 2 | 3,0 | 12,2 | 13,2 | 5,8 | 5,8 |
| 756.005-3 | 3 | M5 | 2 | 3,5 | 12,7 | 13,7 | 5,8 | 5,8 |
| 756.005-4 | 4 | M5 | 2 | 4,0 | 20,2 | 18,4 | 9,5 | 9,5 |
| 756.005-5 | 5 | M5 | 2 | 4,0 | 24,0 | 19,0 | 9,9 | 12,0 |
| 756.005-6 | 6 | M5 | 2 | 4,0 | 23,5 | 18,4 | 9,5 | 11,3 |
| 756.007-4 | 4 | M7 | 3 | 5,0 | 20,2 | 18,5 | 9,8 | 9,5 |
| 756.007-6 | 6 | M7 | 3 | 5,0 | 23,5 | 18,5 | 9,8 | 11,3 |
| 756.018-4 | 4 | G 1/8 | 3 | 6,0 | 21,3 | 24,9 | 14,0 | 9,5 |
| 756.018-5 | 5 | G 1/8 | 3 | 6,0 | 24,8 | 26,2 | 14,0 | 12,0 |
| 756.018-6 | 6 | G 1/8 | 3 | 6,0 | 23,0 | 24,9 | 14,0 | 11,5 |
| 756.018-8 | 8 | G 1/8 | 3 | 6,0 | 24,8 | 24,9 | 14,0 | 13,8 |
| 756.014-6 | 6 | G 1/4 | 4 | 8,0 | 24,5 | 29,4 | 18,0 | 11,5 |
| 756.014-8 | 8 | G 1/4 | 4 | 8,0 | 26,5 | 29,4 | 18,0 | 13,8 |
| 756.014-10 | 10 | G 1/4 | 4 | 8,0 | 31,4 | 29,4 | 18,0 | 16,5 |
| 756.038-8 | 8 | G 3/8 | 5 | 9,0 | 28,5 | 35,6 | 22,0 | 13,8 |
| 756.038-10 | 10 | G 3/8 | 5 | 9,0 | 32,8 | 35,6 | 22,0 | 15,5 |
| 756.038-12 | 12 | G 3/8 | 5 | 9,0 | 35,3 | 35,6 | 22,0 | 19,5 |
| 756.012-12 | 12 | G 1/2 | 8 | 11,0 | 37,0 | 40,8 | 26,0 | 19,5 |



758.018-4 M

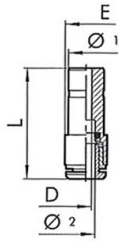
T-Schwenk-Steckverbinder, drehbar, Außengewinde zylindrisch mit O-Ring

| Artikel-Nr. | Ø | F | SW | P | L | L1 | E | E1 |
|--------------|----|-------|----|------|------|------|------|------|
| 758.005-4 M | 4 | M5 | 2 | 4,0 | 40,4 | 18,4 | 9,5 | 9,5 |
| 758.005-6 M | 6 | M5 | 2 | 4,0 | 47,0 | 18,4 | 9,5 | 11,3 |
| 758.007-4 M | 4 | M7 | 3 | 5,0 | 40,4 | 18,5 | 9,8 | 9,5 |
| 758.007-6 M | 6 | M7 | 3 | 5,0 | 47,0 | 18,5 | 9,8 | 11,3 |
| 758.018-4 M | 4 | G 1/8 | 3 | 6,0 | 42,6 | 24,9 | 14,0 | 9,5 |
| 758.018-6 M | 6 | G 1/8 | 3 | 6,0 | 46,0 | 24,9 | 14,0 | 11,5 |
| 758.018-8 M | 8 | G 1/8 | 3 | 6,0 | 49,6 | 24,9 | 14,0 | 13,8 |
| 758.014-6 M | 6 | G 1/4 | 4 | 8,0 | 49,0 | 29,4 | 18,0 | 11,5 |
| 758.014-8 M | 8 | G 1/4 | 4 | 8,0 | 53,0 | 29,4 | 18,0 | 13,8 |
| 758.014-10 M | 10 | G 1/4 | 4 | 8,0 | 62,8 | 29,4 | 18,0 | 16,5 |
| 758.038-8 M | 8 | G 3/8 | 5 | 9,0 | 57,0 | 35,6 | 22,0 | 13,8 |
| 758.038-10 M | 10 | G 3/8 | 5 | 9,0 | 65,6 | 35,6 | 22,0 | 15,5 |
| 758.038-12 M | 12 | G 3/8 | 5 | 9,0 | 69,6 | 35,6 | 22,0 | 19,5 |
| 758.012-12 M | 12 | G 1/2 | 8 | 11,0 | 73,0 | 40,8 | 26,0 | 19,5 |

Schnellsteckverbinder

Serie »click-clock«
 Artikel-Nr. 745.003-3 bis PIB 200

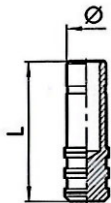
P 6-326



757.0604

Reduzierstücke

| Artikel-Nr. | Ø 1 | Ø 2 | L | D | E |
|-------------|-----|-----|------|------|------|
| 757.0403 | 4 | 3 | 26,0 | 2,0 | 6,3 |
| 757.0604 | 6 | 4 | 29,9 | 2,8 | 9,5 |
| 757.0605 | 6 | 5 | 36,0 | 4,0 | 12,0 |
| 757.0804 | 8 | 4 | 28,7 | 2,8 | 9,5 |
| 757.0805 | 8 | 5 | 34,5 | - | 12,0 |
| 757.0806 | 8 | 6 | 31,9 | 4,5 | 11,5 |
| 757.1006 | 10 | 6 | 36,2 | 5,0 | 11,5 |
| 757.1008 | 10 | 8 | 40,8 | 7,0 | 14,0 |
| 757.1208 | 12 | 8 | 40,1 | 7,0 | 15,5 |
| 757.1210 | 12 | 10 | 44,3 | 8,2 | 16,0 |
| 757.1410 | 14 | 10 | 44,3 | 8,2 | 16,0 |
| 757.1412 | 14 | 12 | 50,0 | 10,0 | 19,5 |



758.006

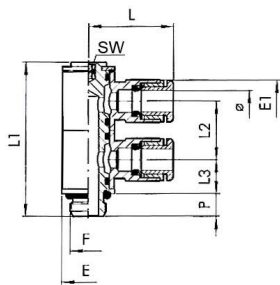
Verschlussstecker

| Artikel-Nr. | Ø | L |
|-------------|----|------|
| 758.003 | 3 | 20,0 |
| 758.004 | 4 | 27,0 |
| 758.005 | 5 | 27,0 |
| 758.006 | 6 | 29,8 |
| 758.008 | 8 | 33,6 |
| 758.010 | 10 | 36,8 |
| 758.012 | 12 | 39,0 |
| 758.014 | 14 | 39,5 |

P 6-326

Schnellsteckverbinder

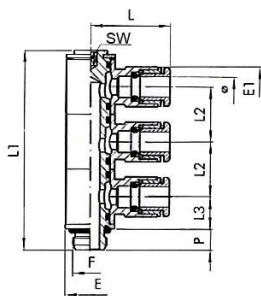
Serie »click-clock«
 Artikel-Nr. 745.003-3 bis PIB 200



759.018-4 M

Mehrfach-Steckverbinder, drehbar, 2 Abgänge, Außengewinde zylindrisch mit O-Ring

| Artikel-Nr. | Ø | F | SW | E | E1 | L | L1 | L2 | L3 | P |
|--------------|----|-------|----|------|------|------|------|------|------|-----|
| 759.005-4 M | 4 | M5 | 2 | 9,5 | 9,5 | 20,2 | 30,3 | 11,5 | 6,8 | 4,0 |
| 759.005-6 M | 6 | M5 | 2 | 9,5 | 11,3 | 23,5 | 30,3 | 11,5 | 6,8 | 4,0 |
| 759.018-4 M | 4 | G 1/8 | 3 | 14,0 | 9,0 | 20,2 | 40,9 | 15,5 | 9,1 | 6,0 |
| 759.018-6 M | 6 | G 1/8 | 3 | 14,0 | 11,3 | 23,5 | 40,9 | 15,5 | 9,1 | 6,0 |
| 759.018-8 M | 8 | G 1/8 | 3 | 14,0 | 13,8 | 24,8 | 40,9 | 15,5 | 9,1 | 6,0 |
| 759.014-6 M | 6 | G 1/4 | 4 | 18,0 | 11,5 | 23,0 | 47,0 | 17,2 | 10,2 | 8,0 |
| 759.014-8 M | 8 | G 1/4 | 4 | 18,0 | 13,8 | 26,5 | 47,0 | 17,2 | 10,2 | 8,0 |
| 759.014-10 M | 10 | G 1/4 | 4 | 18,0 | 16,5 | 31,4 | 47,0 | 17,2 | 10,2 | 8,0 |



760.018-4 M

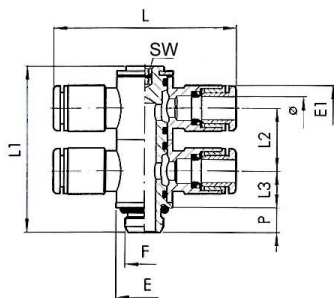
Mehrfach-Steckverbinder, drehbar, 3 Abgänge, Außengewinde zylindrisch mit O-Ring

| Artikel-Nr. | Ø | F | SW | E | E1 | L | L1 | L2 | L3 | P |
|--------------|----|-------|----|------|------|------|------|------|------|-----|
| 760.018-4 M | 4 | G 1/8 | 3 | 14,0 | 9,5 | 20,2 | 56,7 | 15,5 | 9,1 | 6,0 |
| 760.018-6 M | 6 | G 1/8 | 3 | 14,0 | 11,5 | 23,5 | 56,7 | 15,5 | 9,1 | 6,0 |
| 760.018-8 M | 8 | G 1/8 | 3 | 14,0 | 13,8 | 24,8 | 56,7 | 15,5 | 9,1 | 6,0 |
| 760.014-6 M | 6 | G 1/4 | 4 | 18,0 | 11,5 | 25,6 | 64,3 | 17,2 | 10,2 | 8,0 |
| 760.014-8 M | 8 | G 1/4 | 4 | 18,0 | 13,8 | 26,5 | 64,3 | 17,2 | 10,2 | 8,0 |
| 760.014-10 M | 10 | G 1/4 | 4 | 18,0 | 16,5 | 31,4 | 64,3 | 17,2 | 10,2 | 8,0 |

Schnellsteckverbinder

Serie »click-clock«
Artikel-Nr. 745.003-3 bis PIB 200

P 6-326



761.018-4 M

Mehrfach-Steckverbinder, drehbar, 4 Abgänge, Außengewinde zylindrisch mit O-Ring

| Artikel-Nr. | Ø | F | SW | E | E1 | L | L1 | L2 | L3 | P |
|--------------|----|-------|----|------|------|------|------|------|------|-----|
| 761.005-4 M | 4 | M5 | 2 | 9,5 | 9,5 | 40,4 | 29,9 | 11,5 | 6,8 | 4,0 |
| 761.005-6 M | 6 | M5 | 2 | 9,5 | 11,3 | 47,0 | 29,9 | 11,5 | 6,8 | 4,0 |
| 761.018-4 M | 4 | G 1/8 | 3 | 14,0 | 9,5 | 40,4 | 40,9 | 15,5 | 9,1 | 6,0 |
| 761.018-6 M | 6 | G 1/8 | 3 | 14,0 | 11,3 | 46,0 | 41,1 | 15,5 | 9,1 | 6,0 |
| 761.018-8 M | 8 | G 1/8 | 3 | 14,0 | 13,8 | 49,6 | 41,1 | 15,5 | 9,1 | 6,0 |
| 761.014-6 M | 6 | G 1/4 | 4 | 18,0 | 11,3 | 49,0 | 47,0 | 17,2 | 10,2 | 8,0 |
| 761.014-8 M | 8 | G 1/4 | 4 | 18,0 | 13,8 | 53,0 | 47,0 | 17,2 | 10,2 | 8,0 |
| 761.014-10 M | 10 | G 1/4 | 4 | 18,0 | 16,5 | 62,8 | 47,0 | 17,2 | 10,2 | 8,0 |

Sortimentsbox

Handliche, robuste und qualitativ hochwertige Kunststoff- Sortimentsbox mit den gängigsten Teilen unserer Schnellsteckverbinder aus Messing vernickelt, Serie »click-clock «

Insgesamt 30 verschiedene Sorten von Kleinteilen sind in 24 Kunststoffboxen übersichtlich präsentiert. Die Einsätze können herausgenommen und in der Box selbst individuell platziert werden. Alle Einsätze sind mit den Artikelnummern der beinhalteten Teile beschriftet.

Bestückung: 45 gerade Einschraubsteckverbinder G 1/8-4 • G 1/8-6 • G 1/4-6 • G 1/4-8 • G 3/8-8
35 drehbare Winkeleinschraubverschraubungen G 1/8-4 • G 1/8-6 • G 1/4-6 • G 1/4-8 • G 3/8-8
15 gerade Steckverbinder 4, 6, 8 mm
10 Winkelsteckverbinder 6, 8 mm
15 T- Verbinder 4, 6, 8 mm
15 drehbare T- Verschraubungen G 1/8-6 • G 1/4-6 • G 1/4-8
9 gerade Reduzierstecker 8/6 • 10/6 • 10/8
10 Verschlussstecker 6, 8 mm
10 Muffen G 1/8 • G 1/4 • G 3/8
1 PTFE-Dichtband
1 Schlauchabschneider



PIB 200