

## Mounting instructions wall bracket

Please observe all safety instructions in the operating manual of the SilentCare

The wall bracket is used for additional stability of the SilentCare mobile room air purifier.

The wall bracket (fig.1) has a mounting plate with two holes on each side. The rounded side is mounted to the SilentCare.

Fasten this side to the SilentCare with the two M6 screws (fig. 2). Make sure to push the contact washer onto the M6 screw before inserting the screw. The contact washer ensures electrical grounding.

The serrated side (fig. 3) must point to the paint so that the paint is broken through when tightening and an electrical connection is made. Make sure that the contact washers face the varnish with the serrated side. (fig. 4).

Push the SilentCare with the mounted wall bracket to the place on the wall where the mounting should be done. Mark the drill holes with a pencil, push the SilentCare aside and drill the holes into the wall. Use suitable dowels. Push the SilentCare with holder back to the same place and screw it on.

### Attention:

Make sure that there are no water pipes and electrical cables in the wall at the drilling points. Danger of accident!

If a motion detector is used (or another optional accessory), observe the installation instructions supplied with this accessory. Failure to do so may result in damage.



Fig. 1



Fig. 2

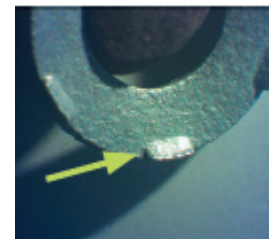


Fig. 3



Fig. 4

## Your Contact

FILCOM GmbH  
Schönbuchstr. 1  
D-73760 Ostfildern

Phone: +49 (0) 711-4413322-0  
Fax: +49 (0) 711-4413322-22  
Mail: [info@filcom.de](mailto:info@filcom.de)

[www.filcom.de](http://www.filcom.de)